

# Circus Suite

## 1 Entry Music

Horn 3/4 Eb

Frigyes Hidas

**Allegro** ♩ = 132

*ff* *f*

25

33

*ff*

**Allargando**

46 **Allegretto** ♩ = 108

54

10

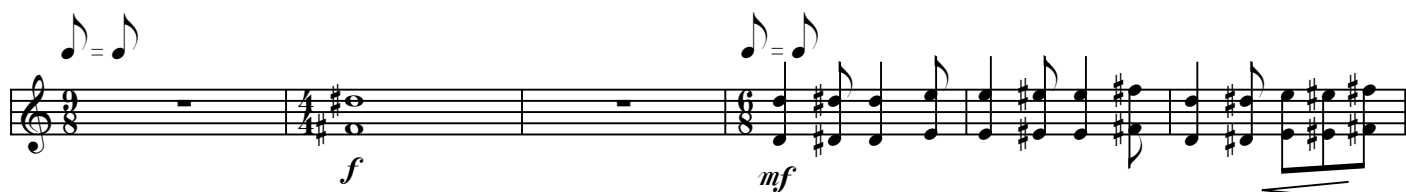
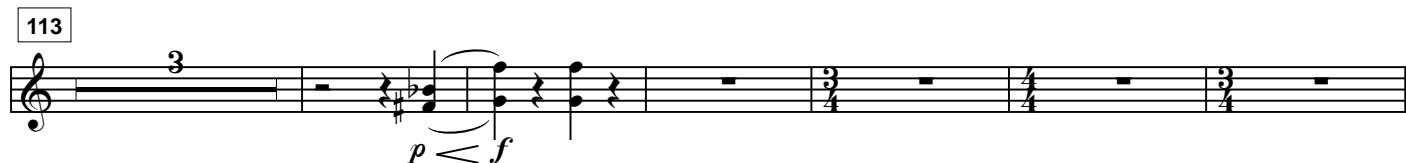
*mf*

**Tempo 1** ♩ = 132



## 2 Clowns

**Allegro Vivace** ♩ = 144



*mf* stacc.

*f*

*Allargando*

*Flebile* ♩ = 72

*Tempo 1* ♩ = 144

*f*

### ***3 Rope Dancer***

**Moderato** ♩ = 98

165

*mf* *mf* *mf*

*poco rit.*

*mf* *dim.* *pp* 3

*p* *mf* *mf* simile

**Piu Mosso** ♩ = 104

*f*

208 **Tempo 1** ♩ = 98

*dim.* *p* 3

Musical score for a piano piece, measures 1-4. The key signature has one sharp (F#). The first staff begins with a piano (*p*) dynamic. The second staff features fortissimo (*fp*) dynamics and a crescendo leading to mezzo-forte (*mf*). The third staff ends with a forte (*f*) dynamic. The fourth staff concludes with a decrescendo.

# 4 Juggler

Musical score for the piece "4 Juggler", measures 247-297. The tempo is marked **Allegro** with a quarter note equal to 132 (♩ = 132). The score is written in treble clef with a key signature of one sharp (F#).

Measure 247: A triplet of eighth notes.

Measure 255: A quintuplet of eighth notes.

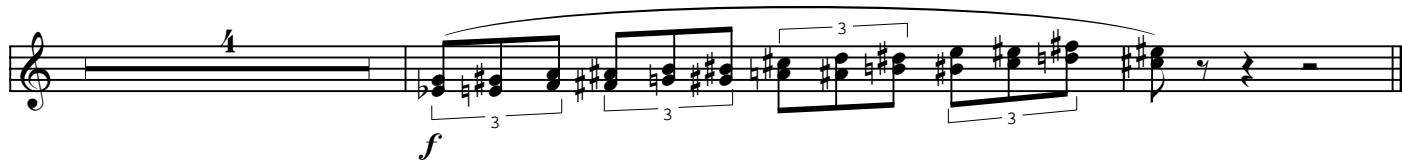
Measure 264: A triplet of eighth notes, followed by a sixteenth-note triplet marked *a2*.

Measure 279: A triplet of eighth notes, followed by a sixteenth-note triplet marked *a2*.

Measure 289: A triplet of eighth notes, followed by a sixteenth-note triplet marked *a2*.

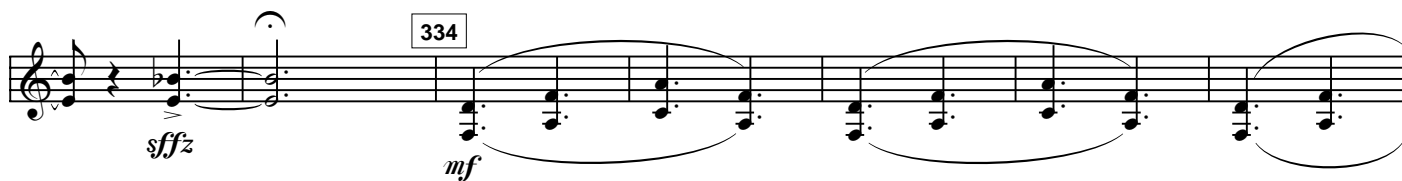
Measure 297: A quintuplet of eighth notes.

Dynamics include *mf* (mezzo-forte), *f* (forte), and *a2* (accidental).



## 5 Trapeze Artist

Adagio  $\bullet = 54$



*Piu Mosso* ♩ = 88

Musical score for the *Piu Mosso* section, measures 375-381. The music is in 6/8 time. Measure 375 starts with a piano (*p*) dynamic. Measures 376-381 show a melodic line with various ornaments and a bass line with sustained chords. Measure 382 is marked with a box containing the number 382.

## 6 Finale

*Animato* ♩ = 120

Musical score for the *6 Finale* section, measures 382-428. The music is in 4/4 time. Measure 382 starts with a forte (*f*) dynamic. Measures 383-428 show a complex melodic and harmonic structure with various dynamics including *mf*, *f*, and *ff*. Measure 412 is marked with a box containing the number 412, and measure 428 is marked with a box containing the number 428. The section concludes with a final chord in measure 428.